



WAVE™ DISPATCH

CENTRALISED COMMUNICATIONS ANYWHERE

Simplify day-to-day operations with WAVE Dispatch. Log in from any internet connection and get access to all the communication tools you need to manage your resources and coordinate an effective operation. Regardless of location, with WAVE Dispatch you're just a click away.

SETUP OPERATIONS ANYWHERE

WAVE Dispatch is managed on-line using your browser, freeing you from maintenance and manual software updates. Securely sign into WAVE Dispatch from anywhere with an internet connection and a standard web browser.

COMMUNICATE IN AN INSTANT

Keep in touch with your teams and field personnel wherever they are with WAVE PTT (Push-To-Talk). Monitor communication traffic and instantly connect with groups and individuals at the touch of a button.

SHARE THE DETAILS

When the details are important, ensure your team has all the information they need. With integrated messaging you can send text, photos, video and files to groups and individuals in a familiar message thread format. See the location of your team, search for an address or point of interest and improve coordination and planning.



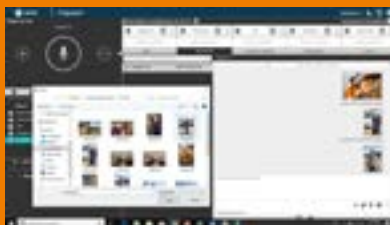
KEY FEATURES



Voice Dispatching

Monitor up to 20 talkgroups.

- One-to-one, group and broadcast PTT
- Presence (Available, Do Not Disturb, Offline)
- Talkgroup scanning with priority
- Voice message fall back
- Call logging and recording
- Supervisory override
- Alerts



Integrated Messaging

Exchange multimedia information.

- Text
- Photos (GIF, JPEG, PNG)
- Videos (MPEG-4)
- Audio files (AAC, MP3)
- Documents (PDF)
- Location data



Location and Mapping

Locate and see members on a map.

- See users on a map
- Selectable map views
- Automatic and on demand location updates
- Find an address or point of interest
- Location history and replay
- In-map communication
- Geofencing

COMPUTER REQUIREMENTS

Hardware	Processor: Dual Core 2.1 GHz (minimum) Intel Core i5 or above RAM (Recommended): 8 GB (minimum) A standard sound card supporting a headset and speaker
Operating System	Windows 8.1/10 Pro or Enterprise 32-bit version Windows 8.1/10 Pro or Enterprise 64-bit version
Browser	Internet Explorer 11, Chrome 45 and higher
Data Connectivity	2 Mbps or greater
Input Accessory Devices	External Microphone (1/8" jack) Headset with PTT (USB) Internal Microphone (supported by system hardware)
Output Accessory Devices	External Speakers (USB, 1/8" jack) Headset with PTT (USB) Internal Speakers (supported by system hardware)

SYSTEMS AND CAPACITIES

WAVE Systems	WAVE
Talkgroup Capacity	130
Contact Capacity	300
Text Messaging	Up to 2000 characters
Image Messaging	GIF, JPEG, PNG / 15MB
Video Messaging	MPEG-4 / 15MB
Audio Messaging	AAC, MP3 / 15MB
Document Attachments	Adobe PDF

Motorola Solutions Ltd, Nova South, 160 Victoria Street, London, SW1E 5LB, United Kingdom.

Availability is subject to individual country law and regulations. All specifications shown are typical unless otherwise stated and are subject to change without notice. MOTOROLA, MOTO, MOTOROLA SOLUTIONS and the Stylized M Logo are trademarks or registered trademarks of Motorola Trademark Holdings, LLC and are used under license. All other trademarks are the property of their respective owners. © 2019 Motorola Solutions, Inc. All rights reserved. (06/19)